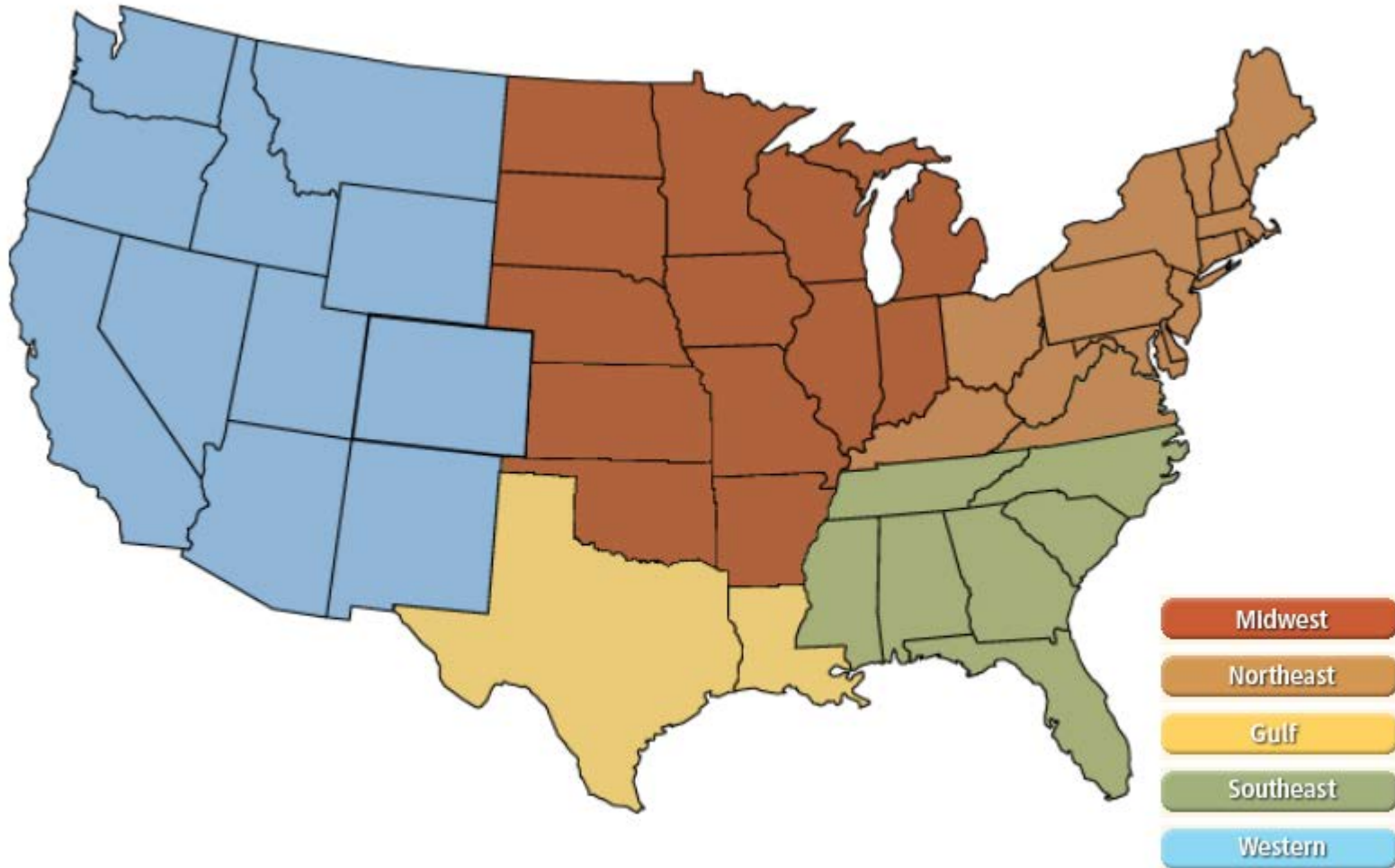
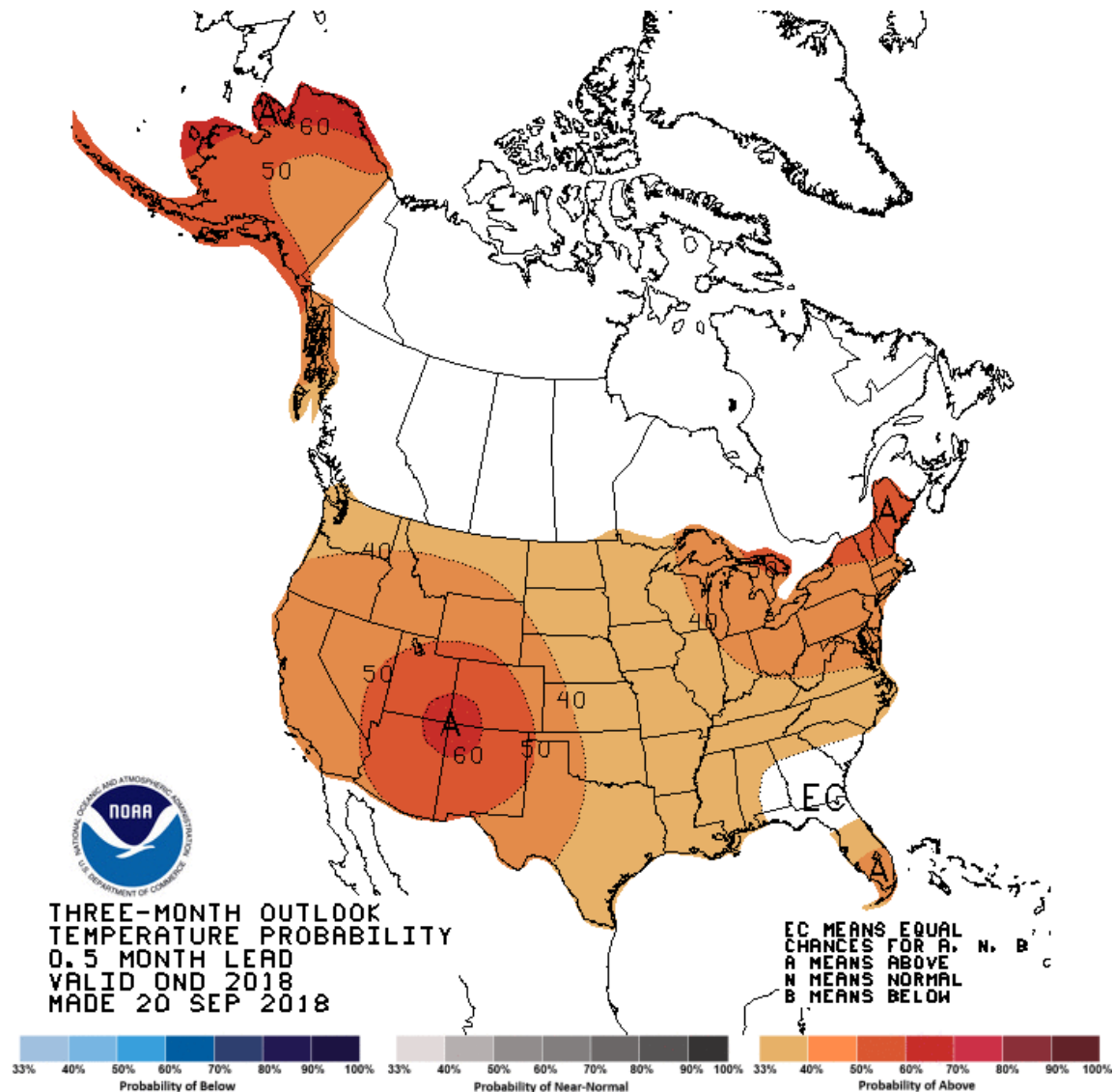


## National



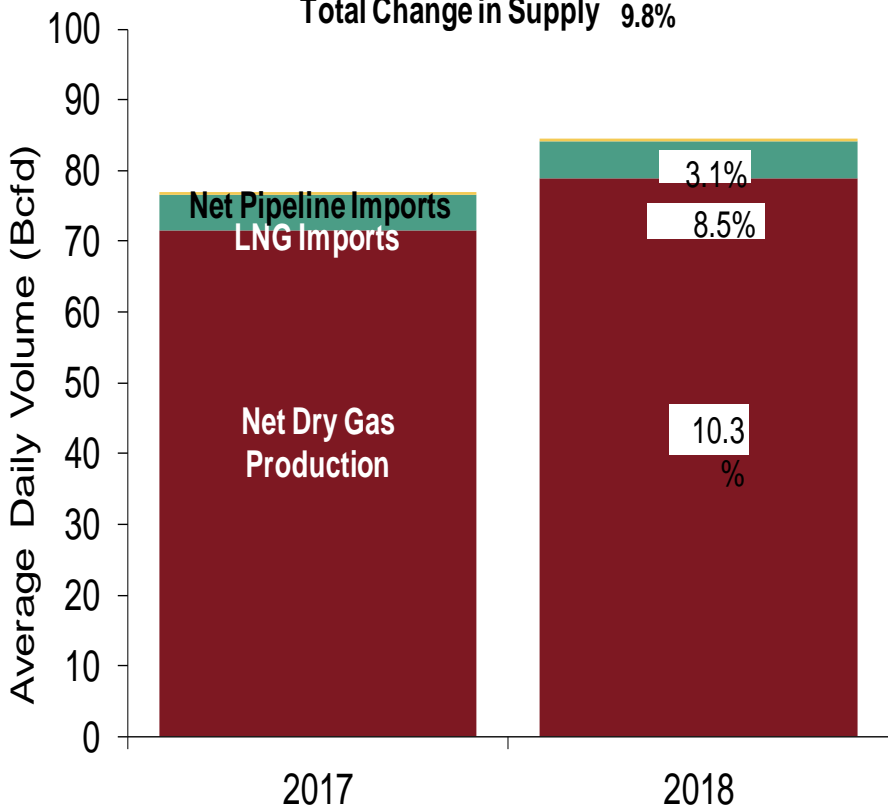
## NOAA 3 Month Outlook



# U.S. NG Supply and Demand Sep-17 YTD vs. Sep-18 YTD

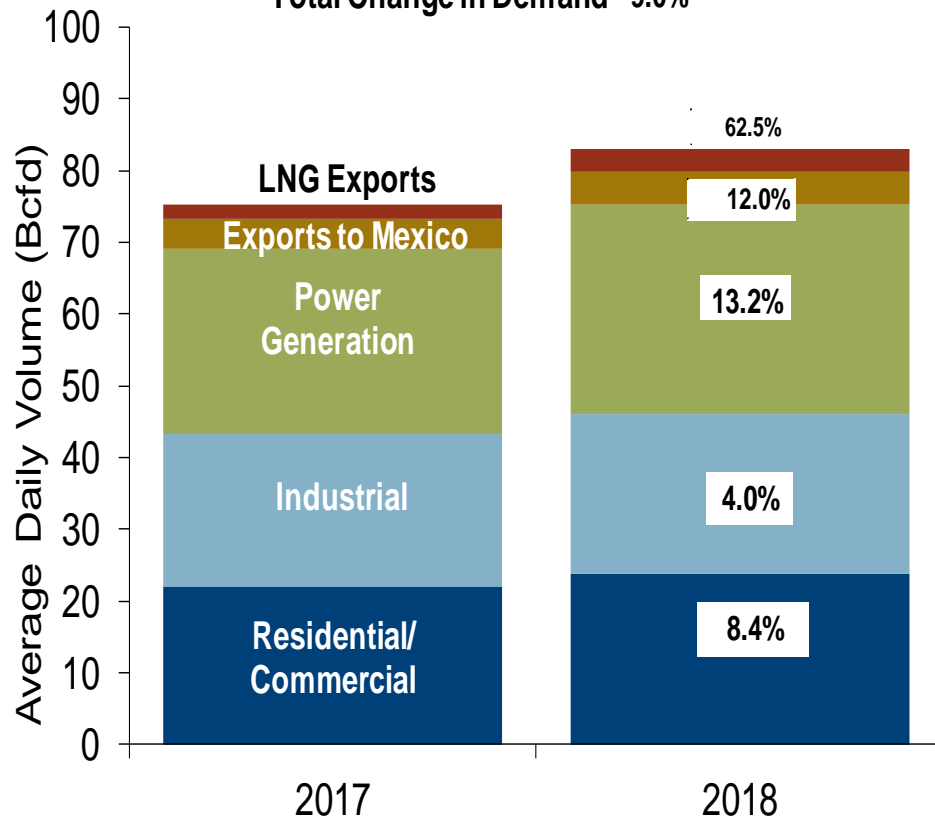
### US Natural Gas Supply

Total Change in Supply 9.8%



### US Natural Gas Demand

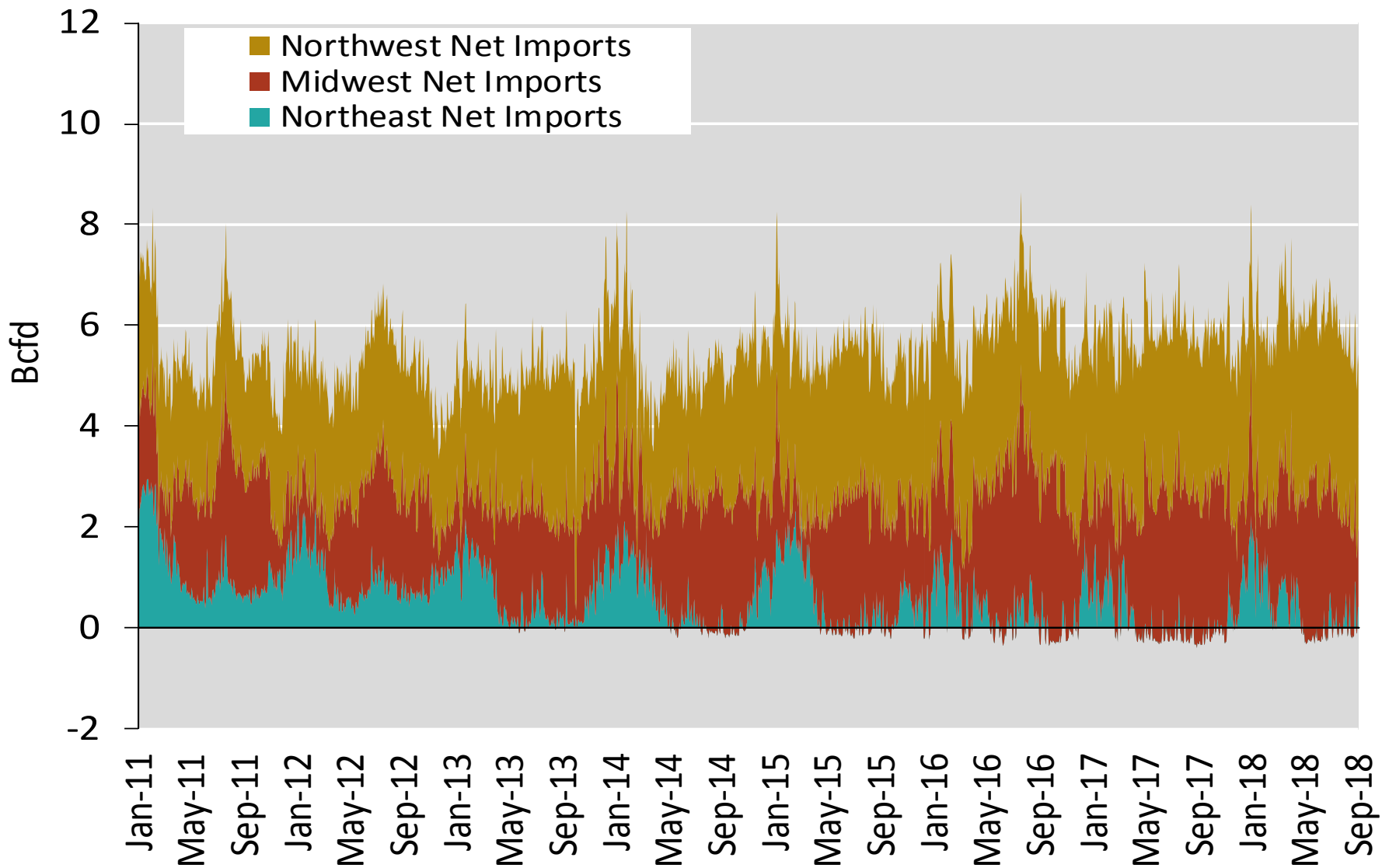
Total Change in Demand 9.0%



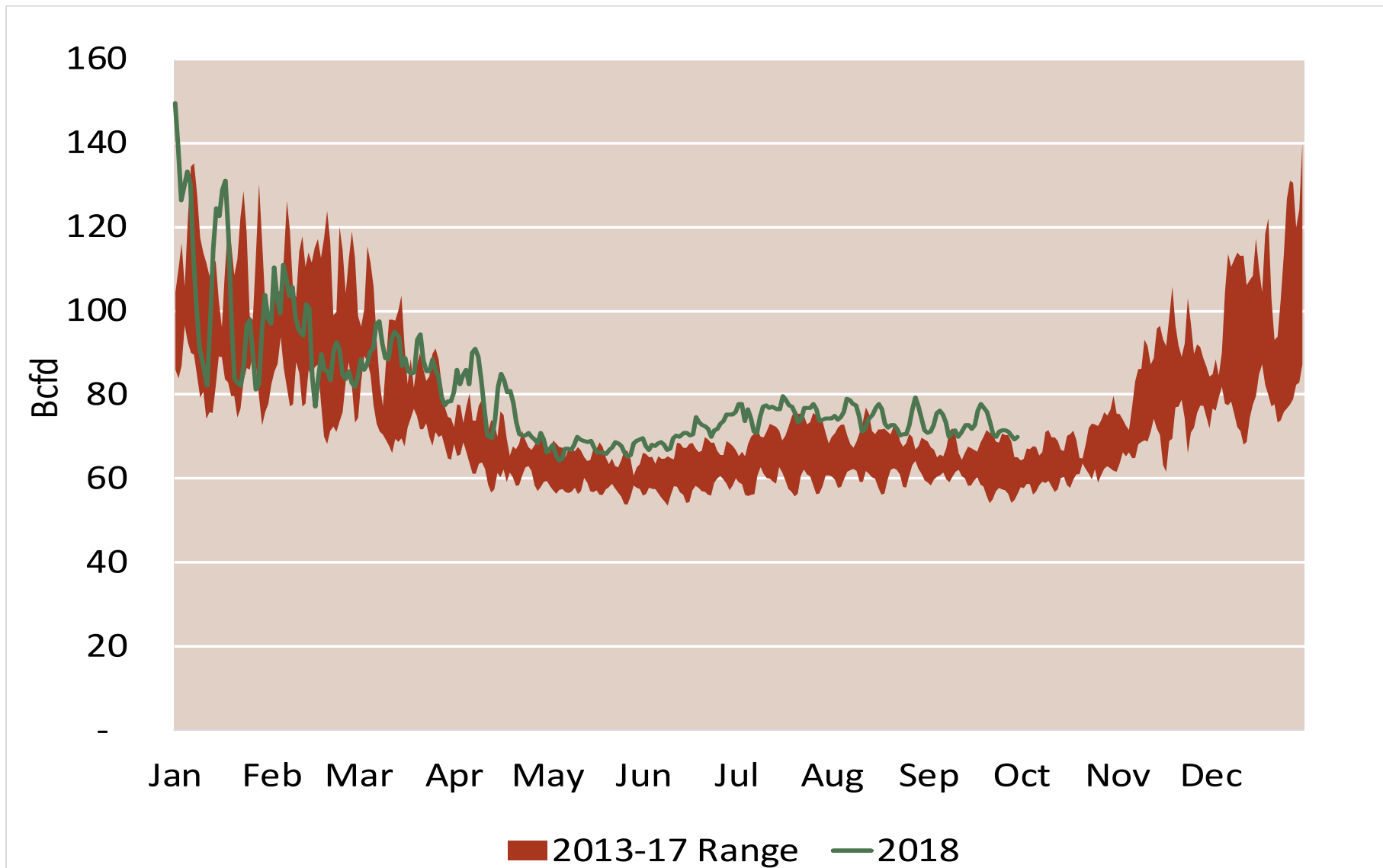
Note: Balance includes all amounts not attributable to other categories.

Source: Derived from *Bentek Energy* data

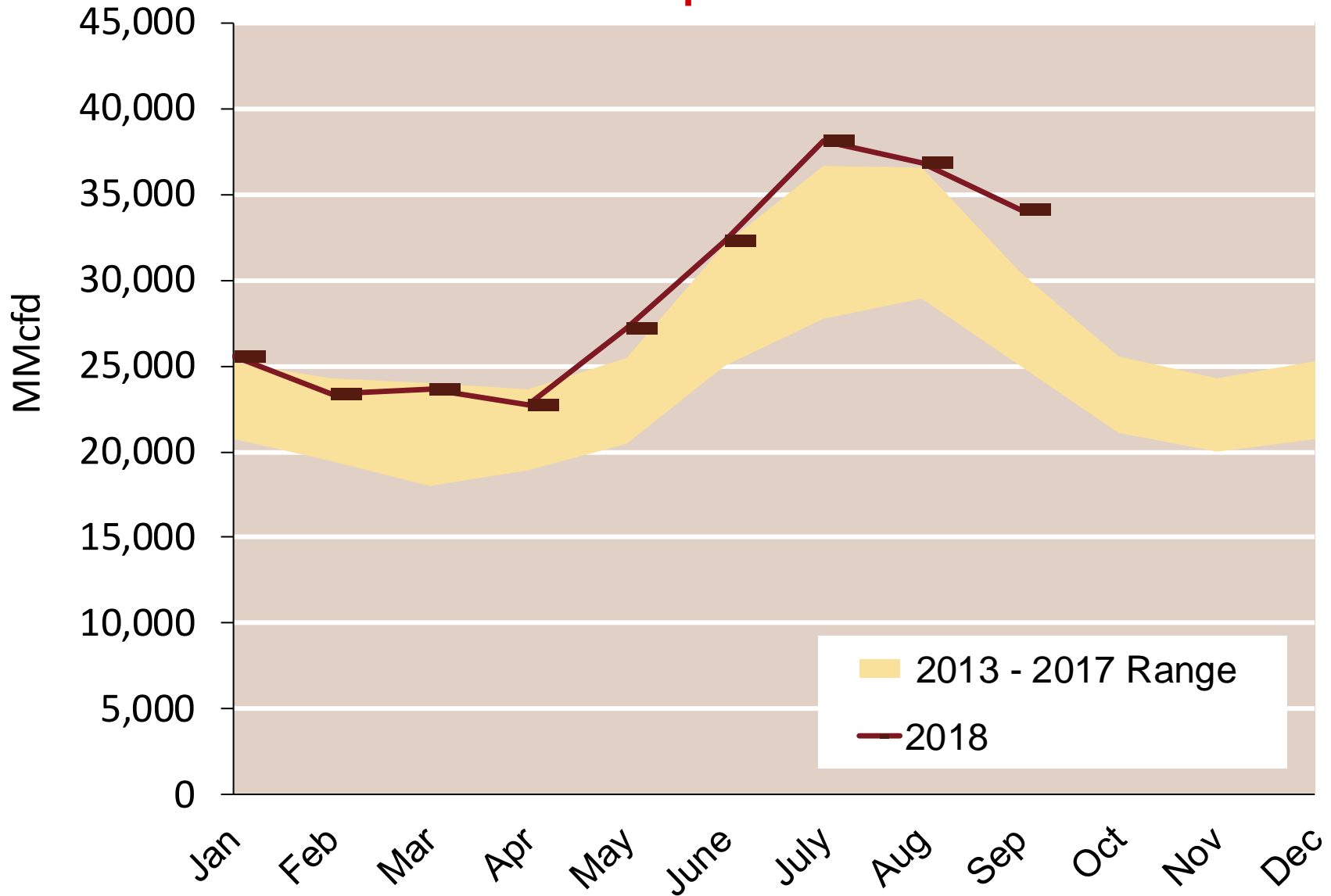
## Regional Canadian Imports



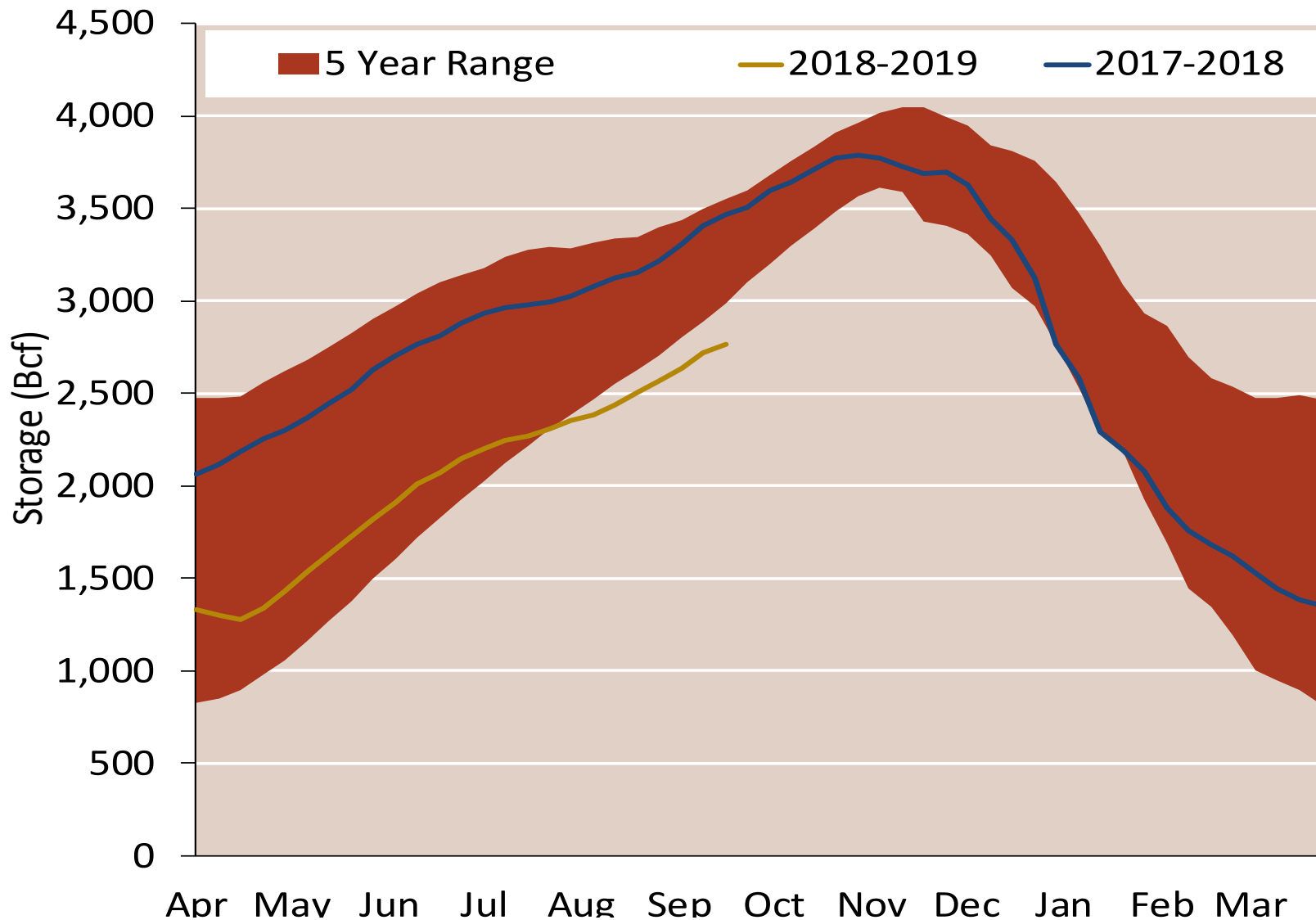
## Total U.S. Natural Gas Demand All Sectors



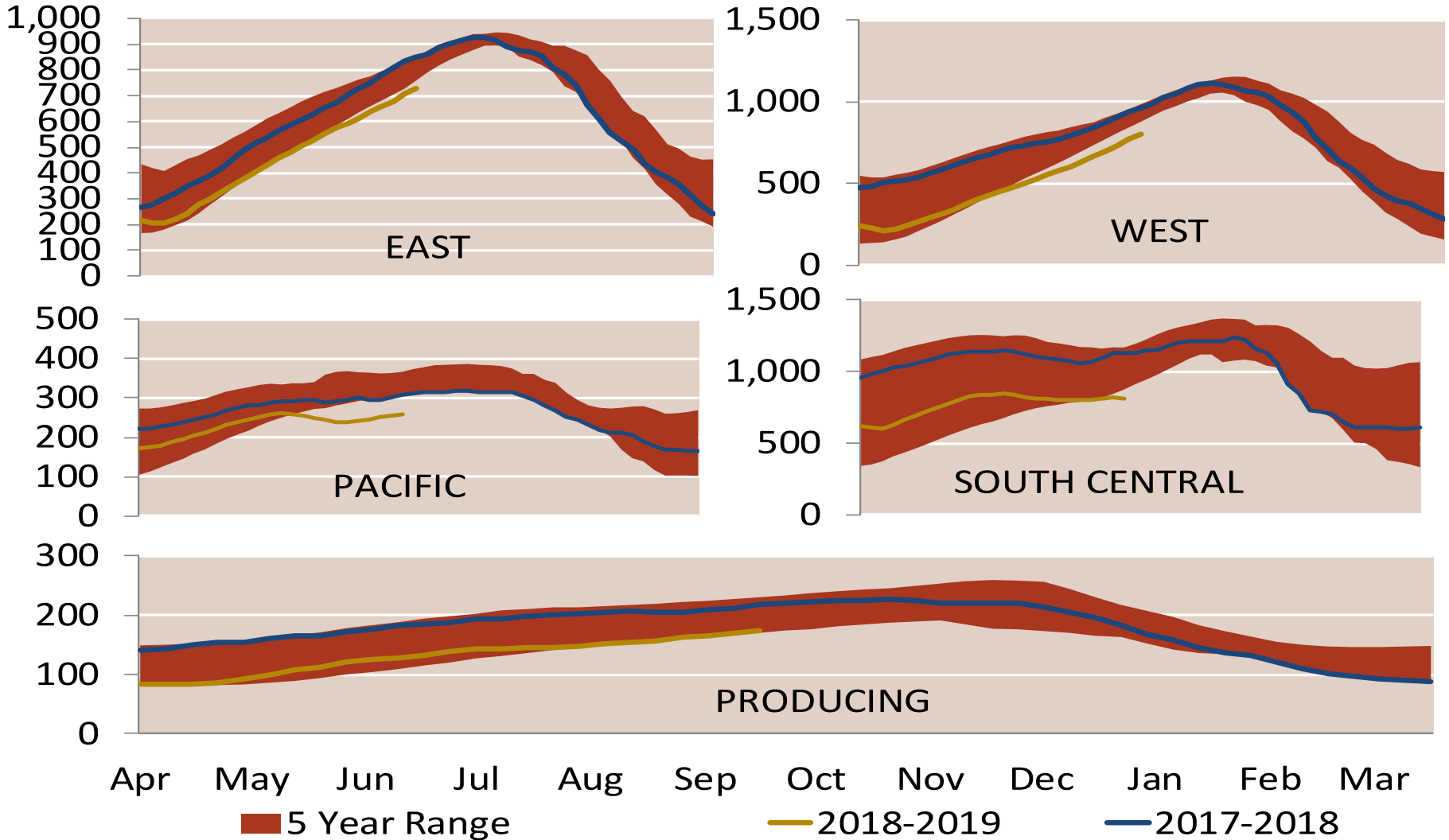
## U.S. Natural Gas Consumption for Power Generation



## EIA Storage Inventories

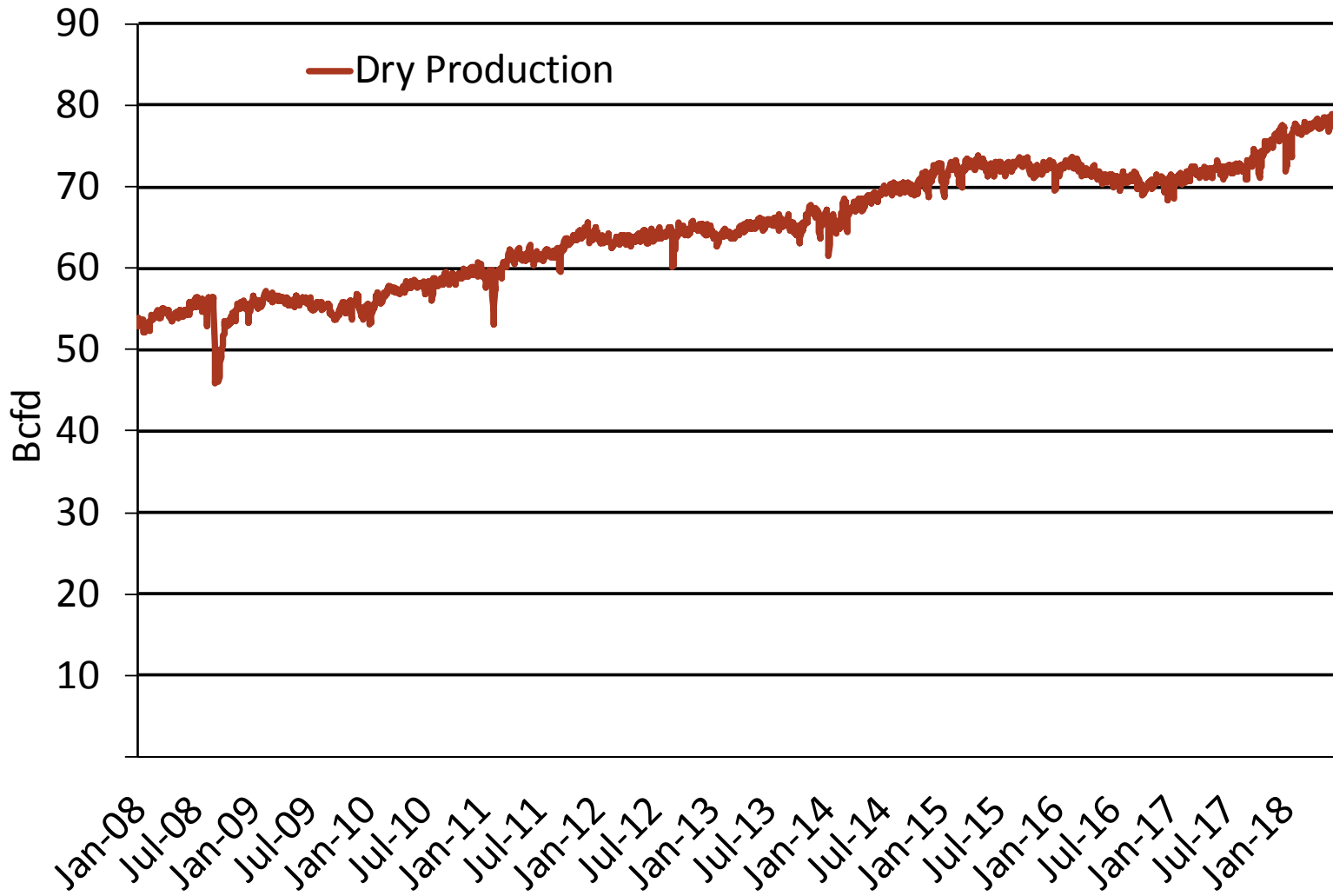


## EIA Storage Inventories



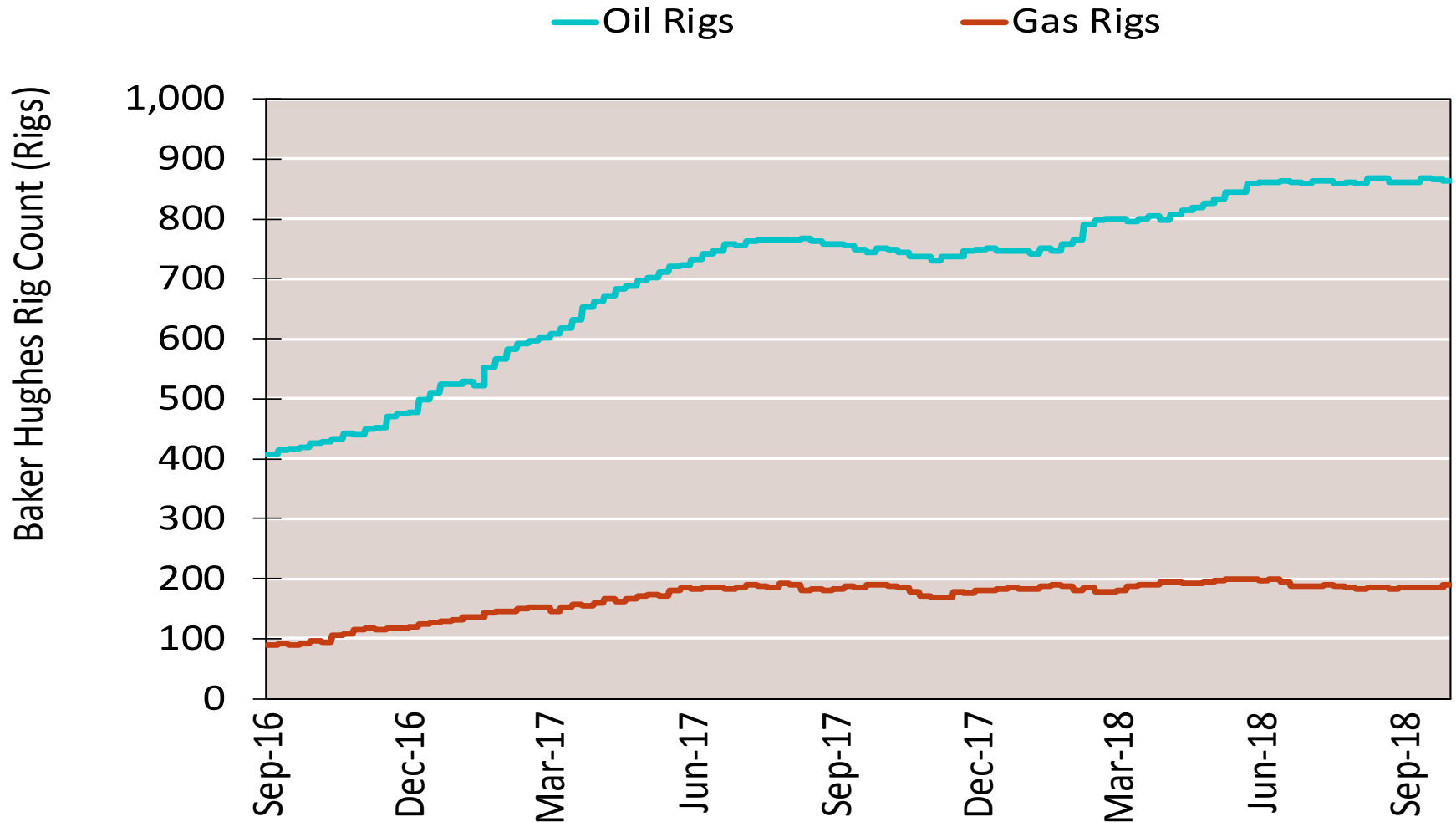


## Monthly U.S. Dry Gas Production – Lower 48 States



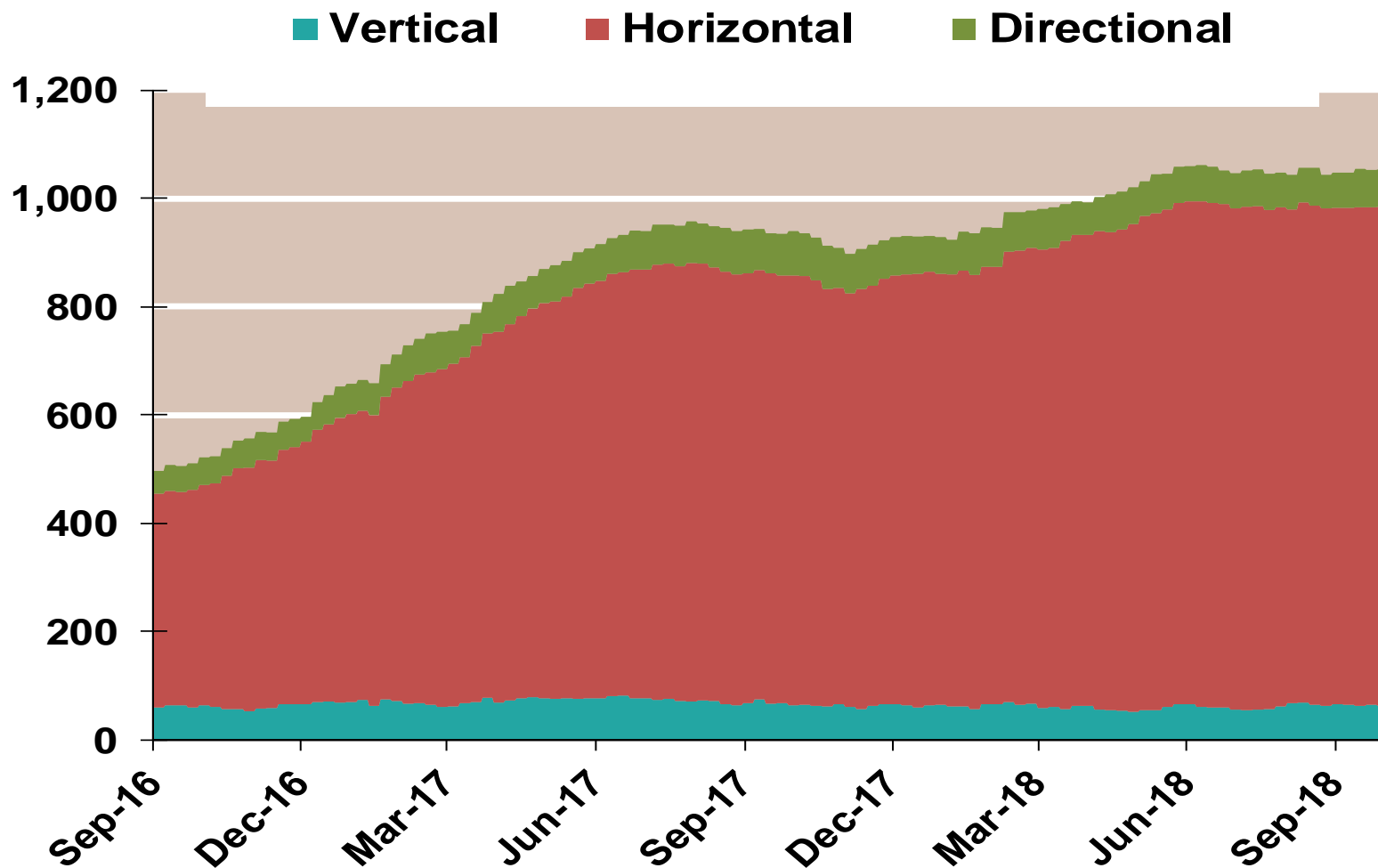
Note: Prior to July 2010, chart was derived from a combination of EIA and Bentek Energy data  
Source: Derived from Bentek Energy data

## NG Rigs by Fuel Type

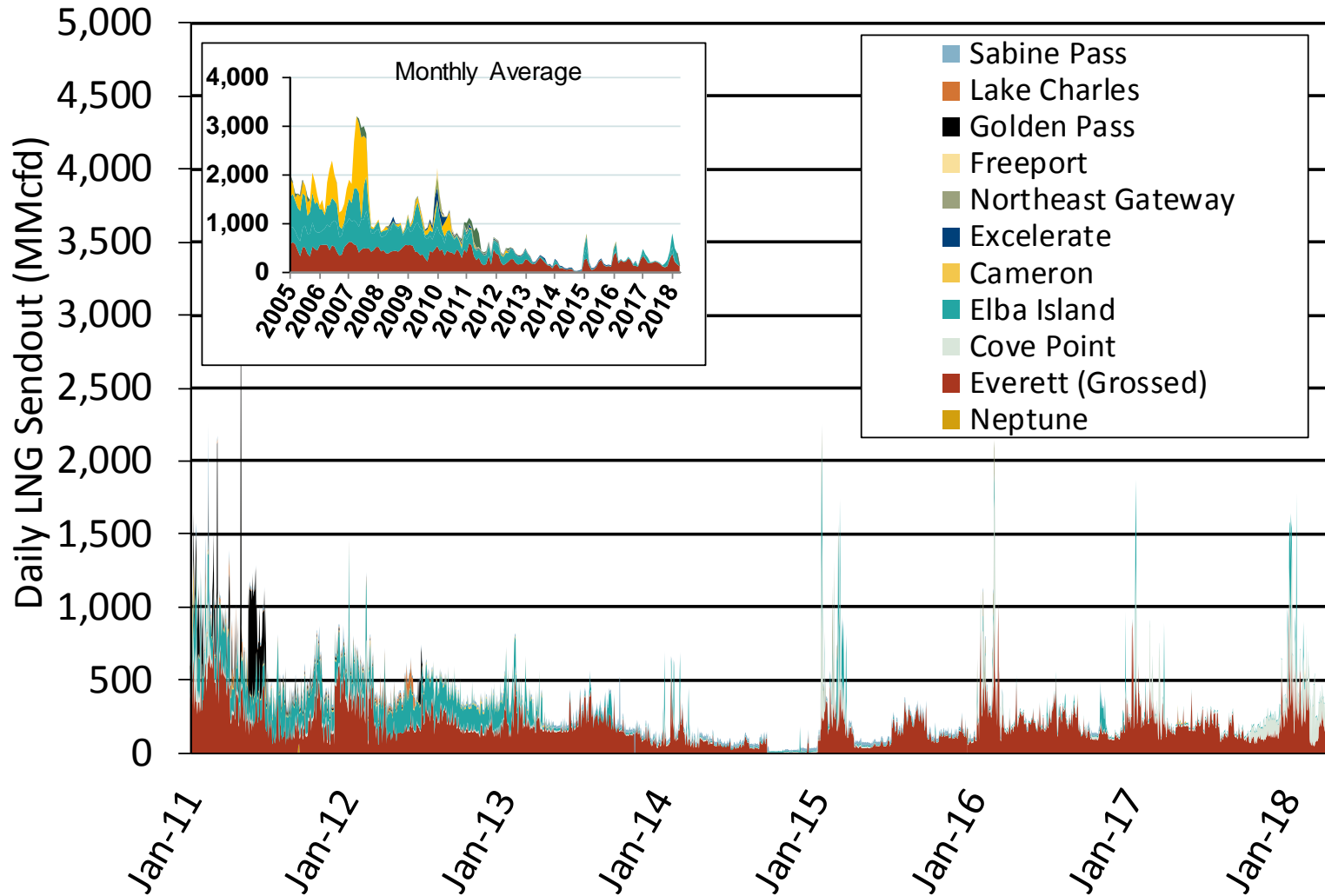


## NG Rig by Direction

Baker Hughes Rigs By Drill Type

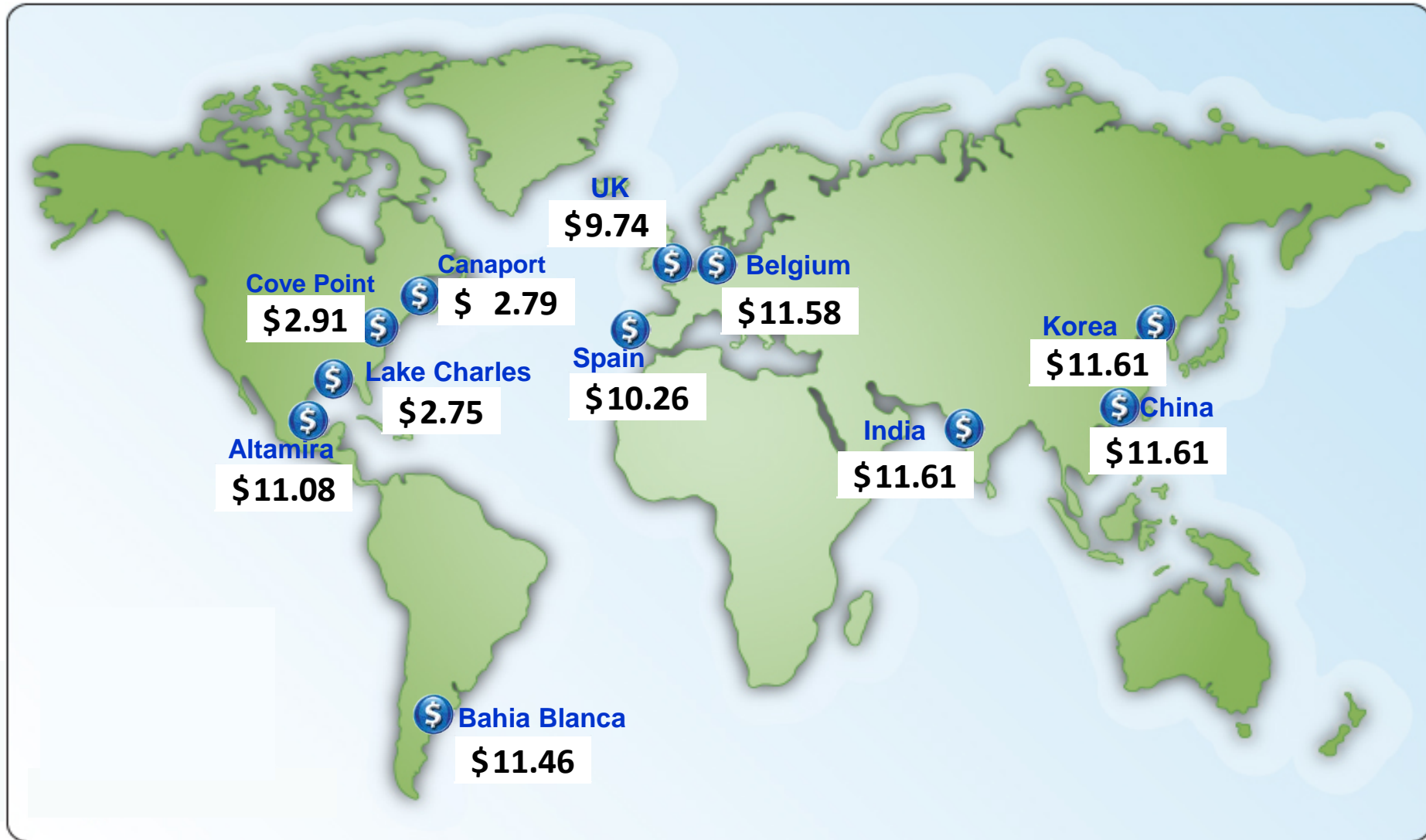


## Daily Gas Sendout from Existing U.S. LNG Facilities



Notes: Everett data includes flows onto the AGT and TGP interstate lines, plus estimates of flows to the Mystic 7 power plant, Keyspan Boston Gas, and LNG trucked out of the terminal. Excludes flows to the Freeport LNG which flows via intrastate pipelines and flows to the Mystic 8 and 9 power plants.

## World LNG Estimated Landed Prices: Sep-18



Source: *Waterborne Energy, Inc.* Data in \$US/MMBtu.

Note: Includes information and Data supplied by IHS Global Inc. and its affiliates ("IHS"); Copyright (publication year) all rights reserved. Prices are the monthly average of the weekly landed prices for the listed month. Landed prices are based on a netback calculation.

Updated: Oct-18

## U.S. Exports of LNG

